

SMOKE SIGNAL

Official Newsletter of Skookum Archers Club and Range

September, 2004

"If you are not working to protect hunting, then you are working to destroy it."
— Fred Bear

Help on The Range

The Club is currently without a Range Director, the Board position responsible for maintaining all the target sheds. As a result, the range needs a lot of help. Because of the vacancy, it's more critical than ever that members keep up their assigned target areas. Please keep up you assigned area. Thanks for your help.

The Club desperately needs a Range Director. Anyone willing to take on this task should contact Dennis Jenkins ASAP.

Game Import Restrictions

Largely because of Chronic Wasting Disease, It is now illegal to import deer or elk carcasses or body parts into Washington if the animals were harvested in Colorado, Wyoming, Utah, New Mexico, Wisconsin, Illinois, South Dakota, Nebraska or Saskatchewan (Canada) except for: meat that has been de-boned in the state or province where it was harvested; skulls, antlers and teeth from which all soft tissue has been removed; hides or capes without heads attached, and finished taxidermy mounts.

Washington hunters are cautioned they could face penalties for bringing home bone-in deer or elk carcasses or body parts harvested from areas where chronic wasting disease (CWD) is present in wild-animal populations.

For more information contact: WDFW Wildlife Program, (360) 902-2515 or Jerry Nelson, (360) 902-2519.

Club Hunting Awards

Once again, the Club will be giving hunting awards to anyone who harvests a deer or elk this fall. Awards will be issued at the Annual Banquet in January. Report your harvest to Hunting Director John Batts (See Board of Directors page for contact info).or list on Club White Board. Report type and sex of animal, number of points (if applicable), and GMU where taken.

Also, if you have a good hunting story to share with the Club, write it up and send it to John. The best ones will be published in the Smoke Signal. Good Hunting!

News and Notes

BPA brought out the heavy equipment to trim and **top the trees** running within their transmission line easement. A large tree next to the target sheds were removed. several trees were topped and/or removed from "B" Course.

The Club has renewed its liability insurance through the National Field Archery Association (NFAA).

Special thanks to **Timm Hines, John Batts, and Pat Fernandez** for all their help on the Range this summer.

The Club plans to hold the **annual Club PicNik and Championship** during October. The summer schedule made it difficult to find a suitable August day.

Hunting Regs

Details of all hunting seasons are available in the 2004 pamphlet edition of Washington's Big Game Hunting Seasons and Rules at Great Northwest Pro Shop on the Range and at the WDFW website <http://wdfw.wa.gov/>

INSIDE THIS ISSUE

Deer Quiz and Cartoons.....	2
Elk Hunting Tips.....	3
If You Plan To Eat It.....	4
Antler Rattling	5
Puyallup Fair Volunteering.....	6
Tournament Winners.....	6
WSAA Convention	7
Calendar.....	8

Great Northwest Archery (253) 841-0991

Your full-service pro shop and indoor range at the
Skookum Archers Club and Range

Elk Quiz

Test your knowledge about Elk. Circle your answer. Correct answers given at bottom of page. From the Hunting Network.

1. Bull elk bugle all year round.
True False
2. How many pounds does the average mature bull elk weigh?
400 600 800 1000
3. A cow elk never grows antlers.
True False
4. When do bull elk shed their antlers?
Spring Summer Fall Winter
5. When is the only time a calf will come out of hiding?
A. In the spring
B. When communicating through bugling
C. When it gets a signal from its mother
D. Elk calves never hide
6. A spike bull is too young to mate or bugle.
True False
7. How many points does a mature bull elk's rack usually carry?
4 6 8 10
8. A bachelor bull doesn't care to be around females.
True False
9. Why do most elk migrate out of the high country in winter?
Predators Too Cold Deep Snow
10. Which of the elk's senses is the least keen?
A. Hearing
B. Smell
C. Sight
D. Touch

Don, what kind of buck lure are you using?

50% of all hunting accidents come from hunters falling out of trees.

Correct Answers: 1. True; 2. 800; 3. False; 4. Spring; 5. C; 6. False; 7. Six; 8. False; 9. Deep Snow; 10. C

Yes, it is last year's hunting license, but I'm only hunting the ones I missed last year.

Elk Hunting Tips



Tip #1: When hunting a herd bull with cows, move in as close as possible and make a few cow calls so you will sound like a cow that has left the herd. Follow up by sounding like a spike bull that has moved in and trying to take one of his cows.

Tip #2: When making cow sounds, use at least two different calls with different tones. Double open reed calls to sound like more than one cow. This can add the extra bit of realism you need to trick that bull.

Tip #3: Break limbs, sticks, and maybe even roll a rock down the mountain when trying to call in a bull. Elk can be very noisy, so don't be afraid to do this. These little things can often change the outcome of your hunt.

Tip #4: Elk typically move to the parks and meadows in the evening and at night. Then move back to the dark timber to bed during the day. Try not to ever disturb the elk in their bedroom. If you can get in front of them, your chances of calling one in are much better when they are on the move between two areas.

Tip #5. Elk movement occurs during the first hour after dawn and before dark. To take the most advantage of your time Elk Hunting, you will need to hike to and from your stand by flashlight. Be prepared to sit quietly from 4:30AM to 10:00AM and then begin moving around, taking in the view, take some pictures or eat a snack and drink some water. Around noon, slowly proceed back to camp or move to another location being sure to glass each meadow at the tree lines and dark shadow areas. If you are going back to base camp for a bite to eat, do so slowly. Proceed back out at around 1:30PM or 2:30PM and plan on staying out until dark. Enjoy the time to also have fun, eat well and take care of yourself physically and mentally. If you do this, your chances of obtaining Elk are dramatically improved.

Tip # 6. Watch the Wind Carefully. The best hunters have learned that the wind shifts constantly, and must be continuously monitored. The wind is alive... it flows like moving water, carrying your scent of danger to a super-sensitive nose. The Elk will smell you before you see them.

Tip # 7. Control Your Smell. Wearing outerwear washed in non-scent soap and stored in a clean plastic bag. Take care to never touch anything with the bare skin when traveling to and from your Elk Stand will make all the difference in the world. And for goodness sake, be sure to go to the bathroom only in camp... The Elk can smell human waste a mile off! Ignore this rule and pay the consequences.

Tip # 8 - Fool Their Senses. There are many ways to fool an elk. You will need to fool not only their nose, but their eyes and ears also. The use of camo clothing is the best place to start. The pattern isn't important, just break up your outline. Use the trees to your advantage, walk within the tree line. You can easily hide from an elk with a relatively small tree. Just make sure that you are not sticking out like a sore thumb. Keep your arms and legs behind the tree, and just peek around the tree with one eye. With the wind in your favor you can easily watch an elk this way until the time for a clear shot arises. As the elk is moving, you too must move in the opposite direction until you can see the rump patch. By seeing the rump means that his eyes are behind the tree and you are safe at that point. You can easily move further around for your shot.

You will also need to cover your scent. Use the commercial cover scent on your boots and clothing. But the use of scent eliminator can be the biggest benefit of all. Just spray it on the inside and the outside of your hat and where you perspire. What this will do is hold the bacteria from your sweat, which is what will give you away the fastest, and not release it.

After the Harvest – If You Plan to Eat It

We all know how to turn the critters into meat (you harvest them). But for some, the step of getting the meat to the dinner table is not as clear as you might think.

Most everybody knows the basics. But, some of the details are unclear to newer bowhunters. Like what makes meat have that strong “wild taste”? How can our meat be mild and delicious enough to be cut with a fork?

After the animal is down and found, everything that is done or not done will affect the quality of the meat - time being the major controlling factor. As soon as the animal is dead, the meat starts to change. If certain actions are not taken in a timely manner, the meat quality will suffer.

The blood, guts and hide need to be removed as soon as possible. The guts are probably the highest priority, next the blood, and then the hide. Getting rid of the guts and most of the blood can be done at the same time. Blood seems to be one of the major contributors to meat having a strong “wild taste”.

The temperature of the meat needs to be reduced quickly. This means the hide needs to come off as soon as possible. The hide on deer is fairly thin and will give you a little more time to get it off without seriously affecting the meat. The hide on an elk is thick and needs to come off right away. As soon as we remove the guts, skin your elk.

The meat needs to be protected from bugs, and hung so it can continue to cool. Put the meat into cloth game bags made of a jersey type material that is very porous and will fit over the hindquarter of an elk very loosely. Special care should be taken not to trap any bugs in the bag with the meat.

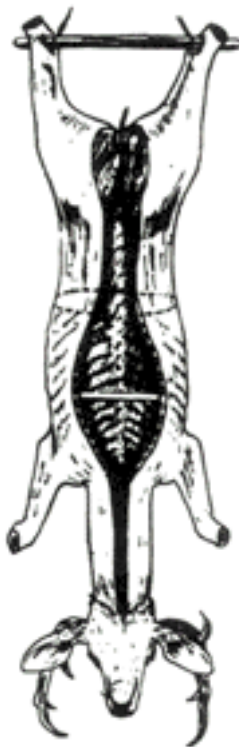
If you are not where you can hang the meat, take it to where you can. (This is where good pack boards come in handy.)

Often times, if you have to pack the meat very far, you shouldn't bring out the rib cage and neck. Instead, remove all the meat, being careful to not forget the two muscles (tenderloins) along the backbone on the inside of the ribcage. Put all this loose meat in a game bag as well. Later, hang the loose meat bag and slip a second bag over it for increased protection against bugs.

Each bag has the meat suspended inside, but the bags are loose around the meat. This promotes cooling and discourages bugs.

The meat will probably start drying on the outside (skinning over) before you are done hanging it on the meat pole. This is good. This “skinning over” is what you want to happen (it helps protect the meat).

The bags must be checked morning, noon, and night to make sure the bags are not stuck to the meat (flies will lay eggs where it is stuck to the meat). When the bloody bags dry and are not stuck to the meat, the bugs are not a problem.



For the tenderest meat possible, it must be aged. If you have daytime temperatures in the 80's to 90's and nighttime temperatures between the 30's and 40's, you can age the meat by keeping it hung in the shade for three to four days. A change in the smell of the meat means it's time to panic. Sometimes you can put the meat in a walk-in cooler or meat locker for up to twelve days. In the meat lockers it takes three times as long to properly age meat as it does in camp. Hanging your meat in a commercial type meat locker is not necessary, but it is safer. Chance of spoilage is much less and bugs are not a bother.

After three to four days of aging in camp or about ten days in the meat locker, the meat needs to be cut up and frozen. All the fat and excess blood has to be removed before the meat is frozen. The dried tissue-like skin is also removed along with any discolored meat. Every bit of hair must be removed (a single piece of hair can taint a whole package of meat). Blood shot tissue is removed (be careful not to throw away meat that is only covered with blood). Rinse your hands often to prevent contaminating the meat with the fat, blood, hair, or filth that might stick to our hands.

Only when the meat is *clean* and *lean* should you cut it into cooking portions. Steaks are cut across the grain of the meat and of even thickness (even thickness promotes even cooking). Clean meat that has a lot of tendons or is too small for anything else is ground into hamburger. Tendons and clean tissues do not seem to really affect the taste of the meat and are OK in hamburger. But try to cut off large amounts of both.

Put into freezer bags, squeeze out the air, and seal.

Antler Rattling

The single greatest addition to an arsenal of productive tactics is deer calling—most important, antler rattling. Of the many big bucks taken, more than one-third are harvested because they “came to the horns.” That total doesn’t include the many that could, or should, have been on that list, but somehow got away.

Here are some valuable lessons about antler rattling. First, keep rattle sequences to 20 to 30 seconds. Even with short sequences, a buck may burst in before you are ready for a shot. When first rattling, try bucks that are clearly going to pass by out of range. Gauging their response builds confidence.

The single most important ingredient for antler-rattling success lies in a deer herd with a well-rounded age structure. Ideally, there will be a good buck to doe ratio, with a good percentage of the bucks being mature. In healthy herds, competition among bucks—both in establishing a pecking order and in breeding rituals—is very much a part of the animals’ yearly tradition. From early season sparring bouts to full-blown breeding-season fights, bucks are acclimated to the sound of “horns.” With the sound of antler rattling a regular part of their environment, attraction to these sounds is a “normal” response.

The sound of rattling antlers means different things to different deer, and there are many variables that determine how individual deer interpret and react to the sound. Does, yearlings and small bucks may run away from the sound of a full-blown breeding fight between mature bucks, yet the same deer may come to the sound of the gentle “ticking” of antlers related to an early-autumn sparring match between youngsters. A mature buck in the peak of the rut may walk right past the sound of a couple of small bucks sparring, yet aggressively charge into the sound of crashing antlers worn by two big bucks fighting over a hot doe. Every situation is unique to itself and only by picking up a set of antlers and starting along the learning curve can you hope to become efficient in interpreting the right place, time and type of call to use.



Antler rattling is effective from early October through late December. Since the November rut is “the big dance,” and mature bucks know this, the build-up period to peak-breeding time is intense. With each passing day leading up to the time when most of the does will come into heat in mid-November, mature bucks begin to gradually increase their daytime activity.

They start “trolling” for hot does and begin to encounter other bucks doing the same. Territories are defended, orders of dominance become confused and chaos and pandemonium rule in the deer world.

When scouting for big bucks, big rubs don’t lie. Small bucks sometimes rub big trees, but they don’t make big rubs. A concentration of big rubs in an area is a sure sign that a monster is present. The sound of an antler-rattling challenge may bring him in.

At this time, antler rattling is at its peak effectiveness. Bucks are looking for a fight or sex, and the distant sound of clashing antlers means one, or both, to them. Everything is set for some awesome responses to the sound of “horns” during this time of maximum frustration and excitement.

When it comes to mastering the art of antler rattling, one of the biggest obstacles to overcome is the gray matter between your ears. The old saying “you’ll never ride if you don’t get in the saddle” lends itself well to this undertaking. If you’ve taken care of the first part of the equation—place and time—then “get some horns and let ‘er fly!” Be determined, have an open mind and let the learning process begin.

**Do not confuse your career with
your life. Take time off and go hunting.**

Bowhunting Basic Gear Checklist

Hunting License
& Permits

Bow, Arrows

Extra Bow String

Treestand(s)

Treesteps,
Ladder

Bow Maintenance
Supplies

Target

Tacklebox, Tools

Broadheads,

Practice Points

Calls, Lures

Binoculars

Range Finder

Shooting Aids
(Release, Tab)

Two-Way Radios

Hunting Knife

Camo Clothes

Game Bag

Congratulations!

Congratulation to Club members who placed at various recent tournaments.

WSAA FITA Championship

ADULT MALE TRAD

Pete Miles 285 554 839 1st

ADULT MALE FSL-R

Timm Hines 608 654 1262 1st

ADULT FEMALE FSL-R

Kristina Miles 451 520 971 1st

WA STATE SENIOR GAMES

Compound Fingers M 60-64

John Finsterbusch 792 2nd

Recurve (Sights) M 65-69

Pat Fernandez 629 1st

Barebow Recurve M 60-64

Sam Payne 550 1st

Welcome!

Welcome to these new Club members who have joined in the past few months:

Jesse West, University Place

Neil McHutchinson, Kent

Gregory Romanczak, Puyallup

James Raihl, Buckley

Eric Rootvik, Kirkland

Shirley Emery, Tacoma

Bowhunter Education

There is one last Bowhunter Education class scheduled. It will begin October 16th at Issaquah. Contact Alan Jones: 425-883-0405

Puyallup Fair Archery Booth Volunteers Needed

A major project for September is the WSAA Booth at The Puyallup Fair. During the entire run of the fair – 17 days, from the 10th to the 26th, we try to get the word out about recreational archery programs and opportunities.

A big draw of the current booth setup is bringing kids into the booth to shoot a few arrows and maybe pop a balloon. WSAA has a set of Genesis bows, arrows and backstop netting. They also have brochures about WSAA, and a list of Clubs and Shops to hand out. We will also have a supply of Skookum Archers Club brochures to pass out.

The critical element is people to staff the booth. The experience last year was that it worked well with three people in the booth. One served as “gate-keeper” to maintain a smooth flow of kids in and out, and to field questions from parents or spectators, while two worked directly with the children (and others) on the shooting line.

The most critical days to be covered are Fridays and Saturdays, as those see more children among the fair visitors. Please call WSAA President Linda Parker at (360) 533-4698 or send her an email note at wsaa@olynet.com to sign up for a shift or several. She will have admission tickets available for people who will work the booth! Thanks for volunteering.

Thanks to Great Northwest Archery

Thanks very much to Doug and staff at Great Northwest for their efforts with the Elk seminar. They really went out of their way to make everyone feel welcome and comfortable. Also a big thanks to Rockie for coming over here to do this seminar he really gave a great presentation. About 80 hunters turned out for this seminar.

2004 WSAA CONVENTION

The 2004 Washington State Archery Association will be held October 22-24 at the Little Creek Casino in Shelton, WA. The Club needs a number of persons to attend and represent the Club. The more Club attendees the more votes we will have on WSAA matters and tournaments. If you are interested in attending, contact any member of the Board of Directors. The Club will pick up the cost of registration and meals.

Friday, October 22

6:00 pm – Registration and Social. Free Music in Lounge: Danny Vernon—Elvis Tribute Artist Triple Crown and Six Pack Pretty—70's & 80's Rock Group

Saturday, October 23

8:00 am - Registration & Check-in
9:00 am - General Assembly
(Lunch is on your own)
5:30 pm—Social Hour, no host Bar
6:30 PM Buffet Dinner

Sunday, October 24

9:00 am - General Assembly
11:00 am Brunch

Sportsmens Show Chairperson Sought

For the past two years in late January the Club has sponsored the Archery Tent at the annual Sportsmen's Show at the Puyallup Fairgrounds. Each year more than 2,000 kids and adults try their hand at shooting a bow. Thousands more pass through the booth. We setup 3 FITA targets and 9 3-D animals including 3 very realistic dinosaur targets loaned to us by the O'Loughlin trade show that are a big hit with the kids.

Last year Steve Cauffman chaired the event. The Club would like to continue this effort and is seeking someone to volunteer to head up the event for the 2005 show. If you are able to chair the event (which requires attendance most of the week), please contact President Denny Jenkins.

Great Northwest Archery

Gear Up for the Hunting Season With Our Great Deals

Your Pro Shop at the Skookum Archers Range. We feature an indoor shooting range, a full-service pro shop dealing Hoyt, Parker bows and PSE bows, and an extensive line of archery products and services. We also sell WA hunting and fishing licenses. Open daily.

(253) 841-0991

BOARD OF DIRECTORS

PRESIDENT

Dennis Jenkin, (253) 862-8582
dennis_jen@msn.com

VICE PRESIDENT

Shane Peterson; (253) 631-5702
fingershooter@comcast.net

SECRETARY

Shawn Johnston; (253) 826-5592
slsjohnston@comcast.net

TREASURER

Kristina Miles; (360) 893-4919
kmiles@eskimo.com

COMMUNICATIONS

Don Morrison, (253) 565-6253
morrison@lgi.org

TOURNAMENT

Dan Croft, (253) 770-7662

RANGE

vACANT

GROUNDS

Pat Fernandez, (253) 927-9741

HUNTING

John Batts
jkbatts@comcast.net

ACTIVITIES

Open - Volunteer Today!

The monthly member and Board of Directors meetings are held the second Thursday of the month. The member meeting is at 6:30pm, and the Board meets at 7:00 pm, in the Club House.

SMOKE SIGNAL



**Skookum Archers Club
and Range**
11209 Shaw Road East
P.O. Box 73753
Puyallup, WA 98373

Club Line: (253) 770-4177
www.skookumarchers.com
info@skookumarchers.com

Don Morrison, Editor



**Gook Luck
to our
Bowhunters**

- **Thurs., September 9, Club Member Meeting, 6:30 pm, Board meeting thereafter**
- **September 10-26, WSA Archery Booth at Puyallup Fair**
- **October 2nd, 3-D Saturday, Skookum Range, 8am - 2pm**

CALENDAR

Target Assignments: Active Members are responsible for maintaining a target area. Life Members, Associate and Junior Members are not required to maintain a target area. IF YOU DON'T KNOW YOUR TARGET ASSIGNMENT, CONTACT THE CLUB VICE-PRESIDENT. Your target assignment is generally printed on your Smoke Signal mailing label. You are responsible for replacing the Target Face when needed, picking-up trash in your shooting lane, and reporting maintenance that needs to be done to the Grounds Chair, and reporting any range work (target shed, shooting bales or shooting stakes) that needs to be done to the Range Chair. Replacement targets can be acquired by contacting the Pro-Shop. Please do not replace targets until they need it; typically this means that the center scoring area is shot out. Also, we can all pitch in on replacing the target faces on the flat range. Thanks for working together!

Notice to Active Members: There is a "To Do" list posted on the Club House outside bulletin board. In addition to your target assignment, those seeking work hours to reduce dues can perform any of the tasks listed on the "To Do" list. For other work that needs to be done, contact Cooper Ewing, Range Master, or Pat Fernandez Grounds Director.